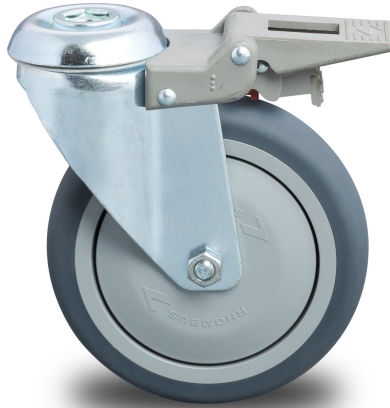


Image not found or type unknown



## Technical information

**Productnumber : 75.360.526.103**



### Product description

Light duty swivel casters with brake made of pressed sheet steel, bolt hole fitting, gray non-stretching thermoplastic rubber tire, precision ball bearing, Wheel-Ø 100mm, 100KG

wheel: gray non-stretching thermoplastic rubber tire, with wheel center made of polypropylene, precision ball bearing, thread protectors

Advantages: Top quality, with excellent rolling properties. Plastic thread protectors prevent contamination of the hub.

Applications: Care beds, cleaning equipment, computer equipment, display stands, garbage cans, food transport, industrial kitchens, laundry carts, medical-technical equipment, newspaper dispensers, hospitality applications, sales stands, store fixtures.

Suitable Surface: Flat or with minor unevenness. Non-stripping tape for use on ceramic tiles, linoleum, etc.

Suitable environment: Dry and not permanently damp. With light acids and bases.

### Specifications

Article arrangement: New

Version: Ø 100 mm

Top: bolt hole 12 mm

Colour: colorless

Length (mm): 100

Height (mm): 131

Wheel bearing: ball bearing

Wheels diameter: 100

Type: castor wheel with brake

Material: thermo rubber

Bolt hole: Ø 12 mm

Surface treatment: galvanized

Width (mm): 30

Loading capacity (kg): 100

Type number: 360526103

EAN Code (Gtin) 8719424235401

Scan the QR code for more information



**KRUIZINGA.NL®**  
Opslag- en transportmiddelen

**KRUIZINGA.DE®**  
Lager- und Transportmittel

**KRUIZINGA.FR®**  
Stockage et ressources de transport

**KRUIZINGA.COM®**  
Material handling equipment